

SMU_Reset_Alarm_1 for KIT_AURIX_TC275_LK

Reset triggered by an SMU alarm

AURIX™ TC2xx Microcontroller Training
V1.0.0



[Please read the Important Notice and Warnings at the end of this document](#)

Scope of work

The SMU triggers an alarm, which resets the device as preconfigured reaction.

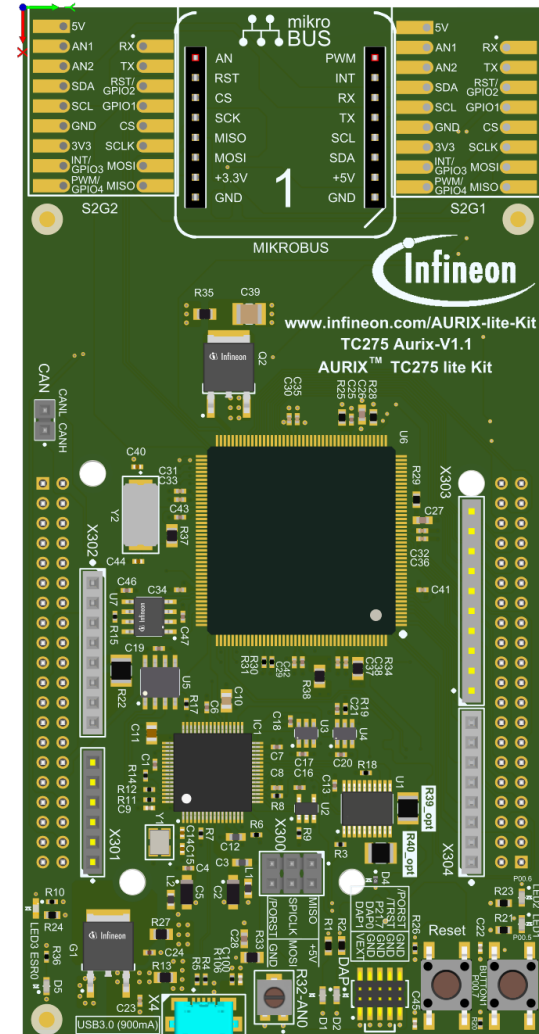
The Safety Management Unit (SMU) is configured to trigger a reset if an internal software alarm occurs.

Introduction

- › The Safety Memory Unit (SMU) is a central and modular component of the safety architecture providing a generic interface to manage the behavior of the microcontroller under the presence of faults
- › The SMU centralizes all the alarm signals related to the different hardware- and software-based safety mechanisms
- › Each alarm can be individually configured to trigger internal or external actions
- › The SMU in combination with the embedded safety mechanisms, is able to detect and report more than 99% of the critical failure modes
- › In this example, Software Alarm 0 is used to trigger a reset

Hardware setup

This code example has been developed for the board `KIT_AURIX_TC275_LITE`.



Implementation

Configure the SMU module

- › To trigger a reset with an SMU alarm, a few steps are required:
 - The reset behavior is controlled by the reset configuration register of the System Control Unit (SCU). To modify this register, it is required to clear and set the Safety ENDINIT protection. This is done with the functions ***IfxScuWdt_clearSafetyEndinit()*** and ***IfxScuWdt_setSafetyEndinit()***
 - To enable the SMU reset, the SMU field of the Reset Configuration Register (**RSTCON**) has to be set to 0x1 for a system reset or 0x2 for an application reset (***SCU_RSTCON.B.SMU = 0x1***)
 - To modify the SMU registers, the SMU module has to be unlocked with the function ***IfxSmu_unlock()***. After modification, the SMU registers have to be locked again using the function ***IfxSmu_lock()***

Implementation

Configure the SMU module (cont.)

- The function ***IfxSmu_setAlarmConfig()*** configures the alarm's behavior by writing a 3-bit code to the three Alarm Configuration Registers associated to the specific alarm and its group. In this example, the software alarm 0 (***IfxSmu_Alarm_SoftwareAlarm0***) and the SCU reset (***IfxSmu_AlarmConfig_scuReset***) are selected. The iLLD function itself selects the group based on the above mentioned parameters
- Start the SMU state machine (SSM) with the function ***IfxSmu_cmd()*** and the parameter ***IfxSmu_Cmd_start***

The functions above are provided by the iLLD headers ***IfxSmu.h*** and ***IfxSrc.h***.

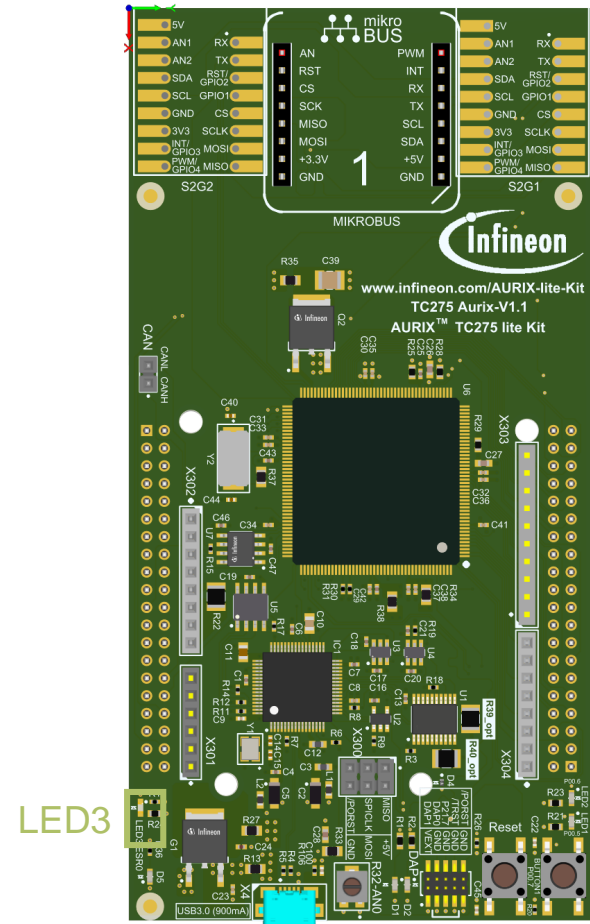
Implementation

Triggering of the alarm

- › The Software Alarm 0 can be triggered with the function ***IfxSmu_triggerAlarm()*** provided by the iLLD header ***IfxSmu.h***

Run and Test

After code compilation and flashing the device, check if **LED3** is turned on.



References



- › AURIX™ Development Studio is available online:
- › <https://www.infineon.com/aurixdevelopmentstudio>
- › Use the „*Import...*“ function to get access to more code examples.



- › More code examples can be found on the GIT repository:
- › https://github.com/Infineon/AURIX_code_examples



- › For additional trainings, visit our webpage:
- › <https://www.infineon.com/aurix-expert-training>



- › For questions and support, use the AURIX™ Forum:
- › <https://www.infineonforums.com/forums/13-Aurix-Forum>

Trademarks

All referenced product or service names and trademarks are the property of their respective owners.

Edition 2021-06

Published by

Infineon Technologies AG

81726 Munich, Germany

© 2021 Infineon Technologies AG.

All Rights Reserved.

Do you have a question about this document?

Email: erratum@infineon.com

Document reference

SMU_Reset_Alarm_1_KIT_TC275_LK

IMPORTANT NOTICE

The information given in this document shall in no event be regarded as a guarantee of conditions or characteristics (“Beschaffenheitsgarantie”).

With respect to any examples, hints or any typical values stated herein and/or any information regarding the application of the product, Infineon Technologies hereby disclaims any and all warranties and liabilities of any kind, including without limitation warranties of non-infringement of intellectual property rights of any third party.

In addition, any information given in this document is subject to customer’s compliance with its obligations stated in this document and any applicable legal requirements, norms and standards concerning customer’s products and any use of the product of Infineon Technologies in customer’s applications.

The data contained in this document is exclusively intended for technically trained staff. It is the responsibility of customer’s technical departments to evaluate the suitability of the product for the intended application and the completeness of the product information given in this document with respect to such application.

For further information on the product, technology, delivery terms and conditions and prices please contact your nearest Infineon Technologies office (www.infineon.com).

WARNINGS

Due to technical requirements products may contain dangerous substances. For information on the types in question please contact your nearest Infineon Technologies office.

Except as otherwise explicitly approved by Infineon Technologies in a written document signed by authorized representatives of Infineon Technologies, Infineon Technologies’ products may not be used in any applications where a failure of the product or any consequences of the use thereof can reasonably be expected to result in personal injury.