

ModusToolbox™ Project Creator user guide

ModusToolbox™ tools package version 3.1.0

Project Creator version 2.10.0

About this document

Scope and purpose

This guide provides information and instructions for using the ModusToolbox™ Project Creator tool.

Document conventions

Convention	Explanation
Bold	Emphasizes heading levels, column headings, menus and sub-menus
<i>Italics</i>	Denotes file names and paths.
Courier New	Denotes APIs, functions, interrupt handlers, events, data types, error handlers, file/folder names, directories, command line inputs, code snippets
File > New	Indicates that a cascading sub-menu opens when you select a menu item

Reference documents

Refer to the following documents for more information as needed:

- [ModusToolbox™ tools package user guide](#)
- [Library Manager user guide](#)

Table of contents

Table of contents

1	Overview	3
1.1	GitHub Manifest files	3
1.2	Created application(s).....	3
2	Launch the Project Creator	4
2.1	As a stand-alone GUI tool.....	4
2.2	From the Dashboard	4
2.3	As a command-line tool	4
3	GUI description	5
3.1	Menus.....	5
3.2	Choose BSP page.....	5
3.3	Select application page.....	7
3.4	Create an application	9
4	CLI description	11
5	Version changes	12

Overview

1 Overview

The Project Creator tool is used with the ModusToolbox™ software to create applications based on Board Support Packages (BSPs) and code examples found in the manifest files. The tool is provided as a [graphical user interface \(GUI\)](#) and a [command-line interface \(CLI\)](#) to create applications for use in any software environment you prefer. The GUI provides a simple interface for users who do not want to use the CLI.

Note: ModusToolbox version 3.x BSPs and applications have been structured differently than version 2.x. For more details about those structure changes, see App Note AN235297. When creating an application, the BSP you select or import in the Project Creator tool determines the compatible template applications available. If they are not formatted to be compatible, 3.x BSPs will not work with 2.x applications and vice versa.

1.1 GitHub Manifest files

Manifest files determine which BSPs and code examples display for use in the Project Creator tool in order to create applications. These files are located by default on GitHub. If for some reason your system cannot access these manifest files, then you will not be able to create an application.

[KBA230953](#) describes methods for working around this issue.

1.2 Created application(s)

The Project Creator tool essentially runs a "git clone" command to create one or more applications onto your computer from a remote server. It also runs the "make getlibs" command to import the necessary libraries.

Different types of applications will have different files and directory structures. After creating the application(s), navigate to the specified root directory. Inspect the files and directories located there. Use these files to modify your application(s) as necessary in your preferred environment.

*Note: The Project Creator tool generates a log file named `project-creator.log` in the **Application(s) Root Path**. This log file captures all commands run by the tool. It will be overwritten if you create a new application in the same path.*

Refer to the [ModusToolbox™ tools package user guide](#) for more details about make commands, BSPs, and the overall structure of ModusToolbox™ applications.

Launch the Project Creator

2 Launch the Project Creator

You can launch the Project Creator in various ways based on your operating system and how you work.

2.1 As a stand-alone GUI tool

Launch the Project Creator as a stand-alone GUI tool by running its executable for your operating system (for example, select it using the Windows **Start** menu or the macOS Finder). By default, it is installed here:

```
<install_dir>/ModusToolbox/tools_<version>/project-creator
```

2.1.1 GUI command-line options

The Project Creator GUI provides several useful command-line options that you can use when launching the GUI. The following table shows each option and its corresponding purpose:

Option	Description
<code>--close</code>	Closes the GUI once the project creation is complete.
<code>--ide <IDE Name></code>	Sets the value of the Target IDE field on the Application page. <IDE Name> can be one of the following: eclipse, vscode, ewarm, uvision, none.
<code>--ide-readonly</code>	Causes the Target IDE field in the project-creator to be read-only.
<code>--machine-interface</code>	Outputs project creation status in a JSON format to the standard output.
<code>--verbose[0-3]</code>	When launching from the executable, you can add this option to specify more or less messaging in the message console. The default level is 1.

2.2 From the Dashboard

Starting with the ModusToolbox™ 3.1 tools package, there is a Dashboard tool that allows you to launch the Project Creator for a given IDE. Refer to the [Dashboard user guide](#) for more details.

2.2.1 VS Code and Eclipse

VS Code and Eclipse have tools to launch the Project Creator tool. Refer to the applicable user guide for more details:

- [VS Code for ModusToolbox™ user guide](#)
- [Eclipse IDE for ModusToolbox™ user guide](#)

2.3 As a command-line tool

To run the Project Creator as a command-line tool, navigate to the install location and run the `project-creator-cli` executable from a command-line prompt. By default, it is installed here:

```
<install_dir>/ModusToolbox/tools_<version>/project-creator
```

For more information about command-line options, run the `project-creator-cli` executable using the `-h` option. Refer to the [CLI Description](#) section later in this document for more details and an example.

GUI description

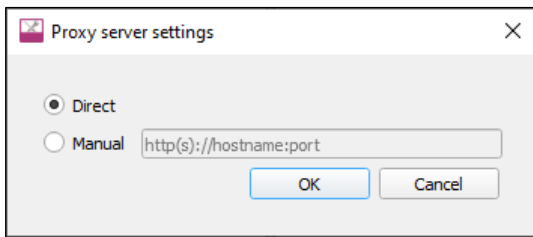
3 GUI description

The Project Creator GUI provides a series of pages used to create a project.

3.1 Menus

The Project Creator has the following menus:

- **Settings**
 - **Local Content** – Check box to toggle between LCS mode on and off, and read the local copy of the manifest file installed from the LCS Manager. Refer to the [Local Content Storage Manager CLI user guide](#) for more details.
 - **Proxy Settings** – Opens a dialog to specify direct or manual proxy settings.

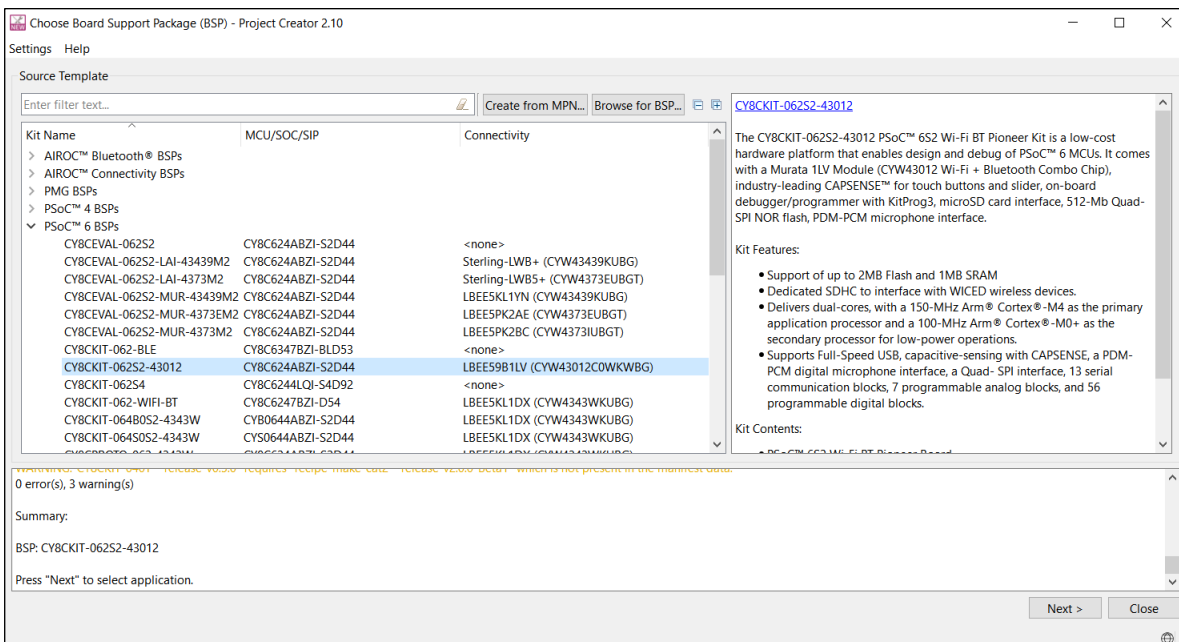


Note: Save any changes before attempting to update proxy settings. A dialog will warn you that changes could be lost.

- **Help**
 - **View Help** – Opens this document.
 - **About Project Creator** – Displays tool version information.

3.2 Choose BSP page

When you first launch the GUI, it displays the "Choose Board Support Package (BSP)" page that lists the available BSPs by various types, such as as AIROC™, PSoC™ 4, and XMC™.



GUI description

Expand one or more categories to view the BSPs, and select the desired BSP by clicking it. A description for the selected BSP displays in the right pane.

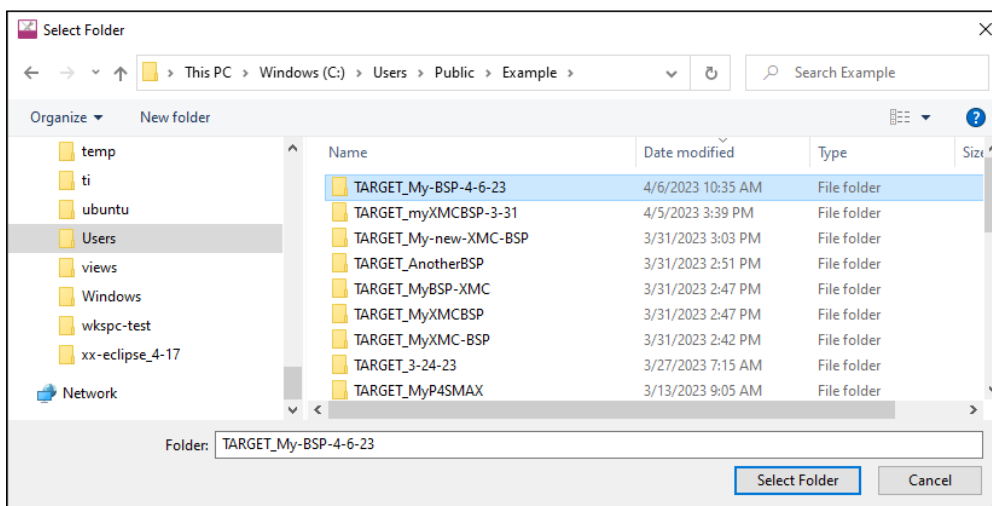
Use the **Expand All** or **Collapse All** options as needed to show or hide all the BSPs.

3.2.1 Create BSP from MPN

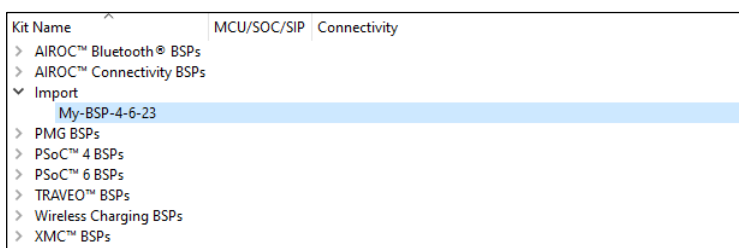
This command opens the BSP Assistant tool to create a BSP based on device part numbers. Refer to the [BSP Assistant user guide](#) for more details about how to create a BSP from MPNs. When you close the BSP Assistant, the new BSP will show up in the list under **Import**.

3.2.2 Browse for BSP

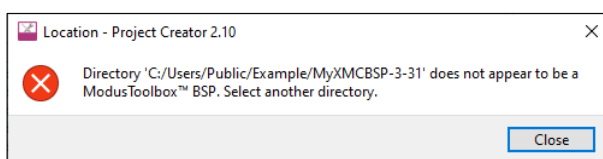
Use the **Browse for BSP** button to select any BSPs you may have created or received from a colleague. You can then create a new application for that imported BSP. After clicking the **Browse for BSP** button, the Select Folder dialog opens to select the appropriate BSP.



Navigate to and select the appropriate folder containing the BSP to import and click **Select Folder**. The tool checks that the BSP begins with the name "TARGET_" and that it has a makefile, but it does **not** validate the makefile for correctness. If the selected BSP is correct, it is added to the list with all the other BSPs.



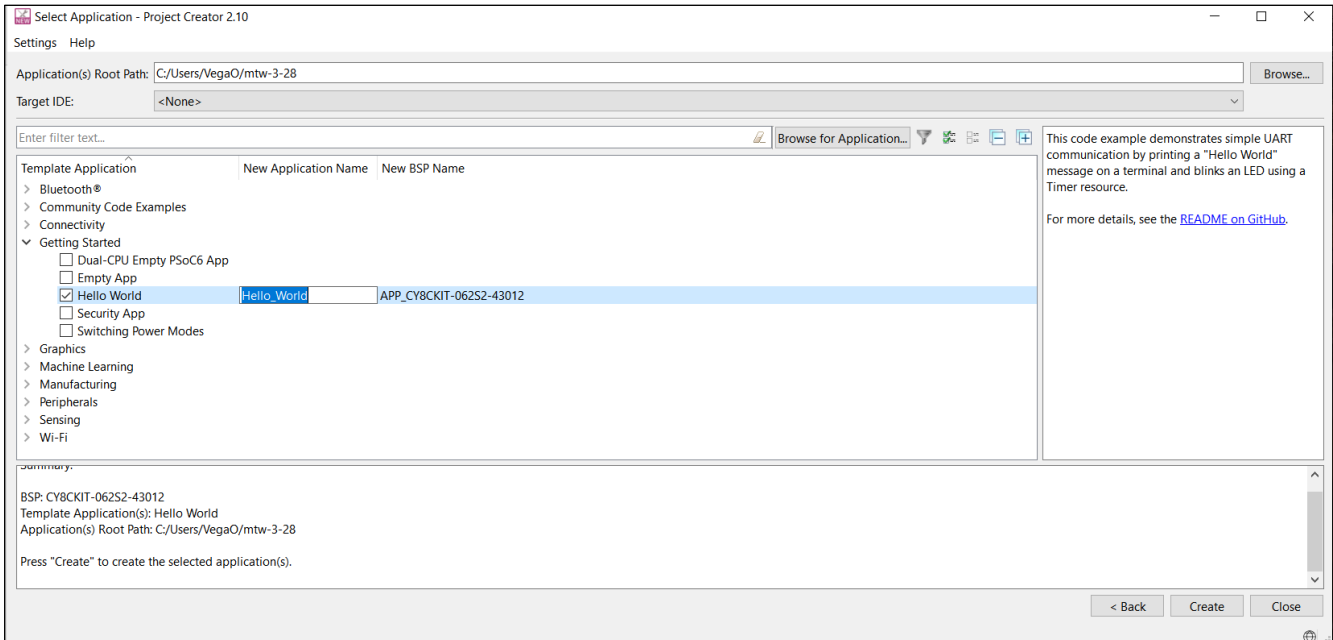
If the selected BSP is not correct, a message displays indicating that it is not valid. Close the message, and either navigate to another directory to find the BSP or cancel the import operation.



GUI description

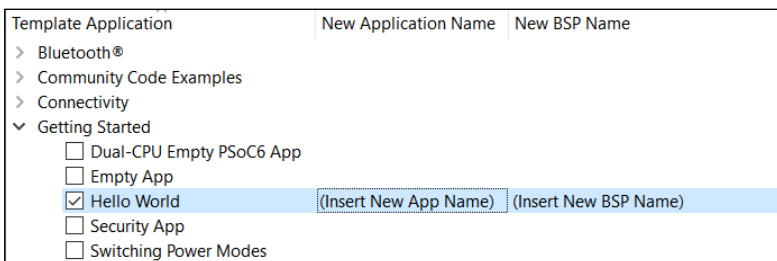
3.3 Select application page

Select a board on the Choose BSP page and click **Next >** to display the "Select Application" page. This page displays the **Template Applications** available for the selected BSP, organized by categories.



On this page, do one or more of the following:

- Specify the **Application(s) Root Path**, or leave it as the default. All files and folders from the application(s) with a selected check box will be copied to this location in a folder with the **Application Name(s)**.
- Optionally pick an item from the **Target IDE** pull-down menu, which will generate the necessary files for the selected target. For more details, refer to the applicable user guide for the desired IDE.
- Expand one or more categories to see the applications available. Use the **Expand All** or **Collapse All** options as needed to show or hide all the applications.
- Select one or more check boxes for applications in the list. You can click on the check box or use the right-click context menu. See [Select multiple applications](#) for more details.
- Type a **New Application Name** or **New BSP Name** for the application(s) by double-clicking on the selected field, or leave the name as the default.



3.3.1 Toolbar options

The "Select Application" page contains a toolbar with several options to assist with the process, including:



- **Filter text** – Field used to show only the applications that match the text entered.

GUI description

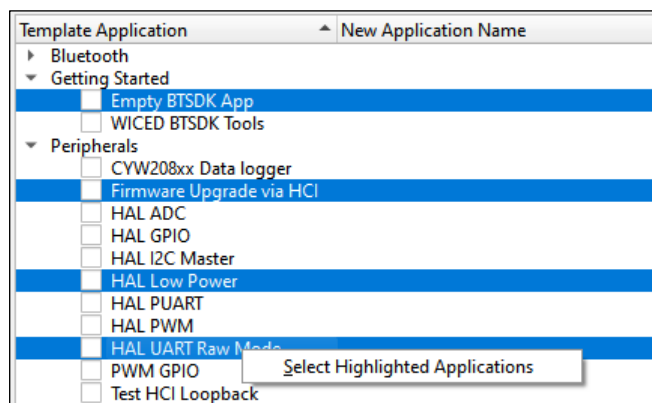
- **Browse for Application** – Allows you to add other applications to the list. See [Browse for application](#).
- **Show/Hide** – Toggle to show only the applications with check boxes selected or show all applications. If there is search text, then only applications with check boxes selected and applications with matching search text will be shown instead of all.
- **Select All** – Select the check boxes for all applications currently shown in the list.
- **Unselect All** – Unselect the check boxes for all applications currently shown in the list.
- **Expand All** – Click to expand all item trees.
- **Collapse All** – Click to collapse all item trees.

3.3.2 Select multiple applications

The "Select Application" page allows you to select multiple applications, as follows:

- Click multiple check boxes next to the applications.
- Click to highlight an application, then press and hold **[Ctrl]** and click additional applications.
- Click to highlight an application, then press and hold **[Shift]** to select a range of applications.

When you have multiple applications highlighted, right-click to open the context menu **Select Highlighted Applications**.



3.3.3 Using filter text

Enter text in the **Enter filter text** field above the list of applications to limit the number of applications shown. This can make it easier to decide which application(s) to select. Text entered in this field is searched against keywords in the application’s manifest, title, and description. Along with applications that match the search, any imported applications are included at the beginning of the list, and any applications with a selected check box are included at the end of the list.

You can enter text with spaces, and they are treated as separate search terms. You can also use a quoted phrase, such as "psoc 6", which is treated as a single term.

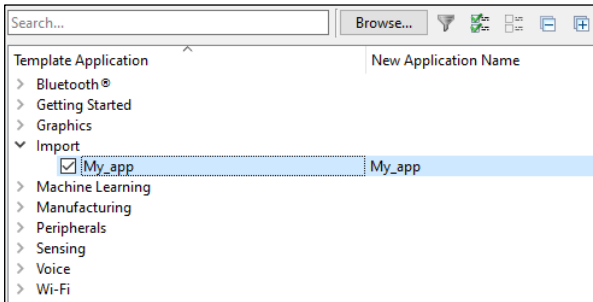
3.3.4 Browse for application

The Select Application page provides a **Browse for Application** button to select other applications you may have created or received from a colleague. After clicking the button, the Select Folder dialog opens. Navigate to the appropriate directory containing the application to import and click **Select Folder**.

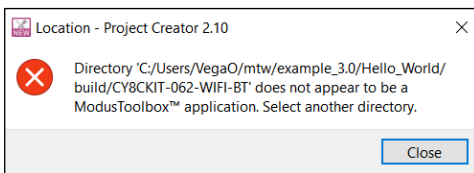
Note: Ensure that you only select an application supported by the BSP you selected on the Choose BSP page.

GUI description

The tool checks that the application to be imported has a makefile, but it does **not** validate the makefile for correctness. If the selected application has a makefile, it is added to the list with the other applications.

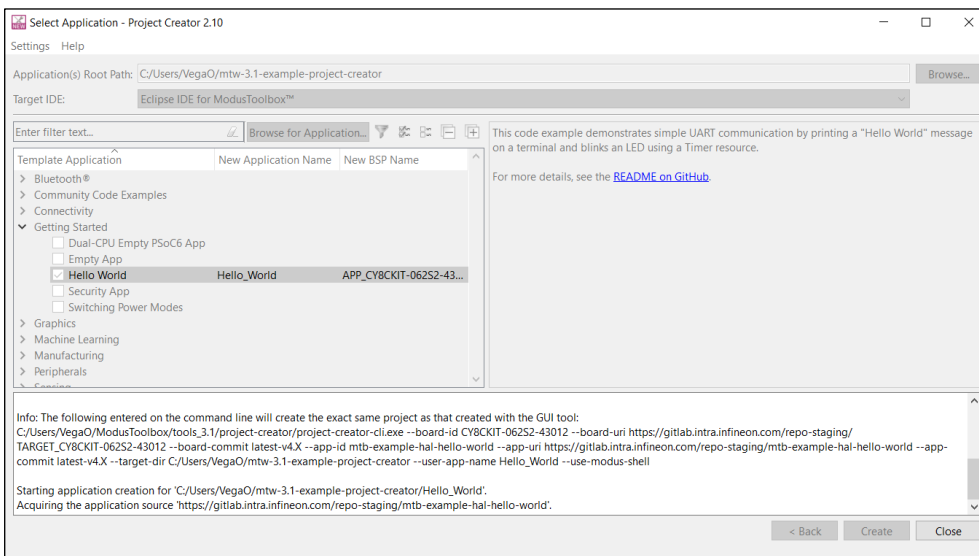


If the application does not have a makefile, a message displays indicating the application is not a valid ModusToolbox™ application.



3.4 Create an application

Click **Create** to start the process of creating a ModusToolbox™ application, and the GUI will display various messages showing the progress.



Note: *During the project creation process, the tool automatically selects the best pair of BSP and application versions from the manifest file. Release versions are preferred over any custom name versions.*

Using the command line (see [CLI description](#)), you can manually select which version to use. If the BSP and application flow versions match, then the project-creator tool will create a project. If not, then it will show an error.

The GUI always shows applications that have at least one application version that is supported by at least one BSP version.

GUI description

When the process completes, the tool will display a message similar to the following:

```
=====
= Import complete =
=====

Successfully created "Hello_World" application.
```

You can continue creating new projects from the "Select Application" page by selecting a new application and then clicking the **Create** button again. You can also go back to the "Choose BSP" page to select another BSP and then continue the project creation process as usual.

To close the tool, click the **Close** button or the **X** button at the top-right of the GUI.

Note: If you launched the Project Creator tool from the Eclipse IDE, the Project Creator tool closes automatically upon completion, and the IDE will import the created application(s).

CLI description

4 CLI description

You can also use the *project-creator-cli* executable to create applications from a command-line prompt or from within batch files or shell scripts. The exit code for the CLI is zero if the operation is successful, or non-zero if the operation encounters an error. For Windows, use the modus-shell bash installed in the ModusToolbox™ "tools" directory. For macOS and Linux, use the appropriate bash for your system.

The *project-creator-cli* executable is located in the same directory as the GUI version of the tool (*<install_dir>/ModusToolbox/tools_<version>/project-creator/*). To see all the options available, run the tool with the *-h* option:

```
$ project-creator-cli -h
```

The following example shows running the tool with the basic options to specify a BSP and application:

```
$ project-creator-cli \  
  --board-id CY8CKIT-062-WIFI-BT \  
  --app-id mtb-example-psoc6-hello-world
```

Version changes

5 Version changes

This section lists and describes the changes for each version of this tool.

Version	Change descriptions
1.0	New tool.
1.1	Redesigned the GUI to provide a better flow. Added Settings and Help menus. Added icon to indicate online/offline status. Added Import BSP button.
1.2.0	Tool can be launched from Windows Start menu. Updated versioning to support patch releases. Updated to select and create multiple applications at one time. Updated to provide information about new library management flow.
1.30	Updated versioning to allow for additional minor changes. Updated the import process to check if the BSP/application includes a makefile. Added Target IDE option to the GUI. Added colors to the messages; red for error, yellow for warning, green for success.
1.40	Added categories for Template Applications. Updated handling of .mtbx files.
2.0.0	Added Expand All/Collapse All buttons. Changed "Custom" to "Import" in the tree. Changed Import button to Browse .
2.10.0	Updated to include new GUI command-line options. Added Create from MPN feature. Added ability to rename BSP. Changed various button names. Changed offline content to Local Content Storage. Removed online indicator.

Version changes

Revision history

Revision	Date	Description
**	2019-10-16	New document.
*A	2020-03-26	Updated to version 1.1.
*B	2020-09-01	Updated to version 1.2.0.
*C	2021-03-25	Updated to version 1.30.
*D	2021-06-28	Updated instructions for using the CLI.
*E	2021-09-30	Updated to version 1.40.
*F	2022-09-30	Updated to version 2.0.0. Removed information about the old flow.
*G	2023-05-09	Updated to version 2.10.0.

Trademarks

All referenced product or service names and trademarks are the property of their respective owners.

Edition 2023-05-09

Published by

Infineon Technologies AG

81726 Munich, Germany

© 2023 Infineon Technologies AG.

All Rights Reserved.

Do you have a question about this document?

www.cypress.com/support

Document reference

002-27988 Rev. *G

IMPORTANT NOTICE

The information given in this document shall in no event be regarded as a guarantee of conditions or characteristics ("Beschaffheitsgarantie").

With respect to any examples, hints or any typical values stated herein and/or any information regarding the application of the product, Infineon Technologies hereby disclaims any and all warranties and liabilities of any kind, including without limitation warranties of non-infringement of intellectual property rights of any third party.

In addition, any information given in this document is subject to customer's compliance with its obligations stated in this document and any applicable legal requirements, norms and standards concerning customer's products and any use of the product of Infineon Technologies in customer's applications.

The data contained in this document is exclusively intended for technically trained staff. It is the responsibility of customer's technical departments to evaluate the suitability of the product for the intended application and the completeness of the product information given in this document with respect to such application.

For further information on the product, technology, delivery terms and conditions and prices please contact your nearest Infineon Technologies office (www.infineon.com).

WARNINGS

Due to technical requirements products may contain dangerous substances. For information on the types in question please contact your nearest Infineon Technologies office.

Except as otherwise explicitly approved by Infineon Technologies in a written document signed by authorized representatives of Infineon Technologies, Infineon Technologies' products may not be used in any applications where a failure of the product or any consequences of the use thereof can reasonably be expected to result in personal injury.